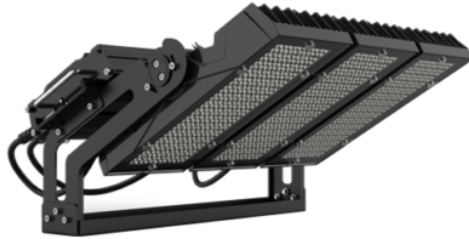


RIGEL



Rigel is a durable, high-quality luminaire designed for tough conditions. Thanks to its excellent adjustability and diverse light distribution properties, this luminaire is perfect for various large outdoor areas, such as sports grounds and parking lots. The installation and maintenance of the luminaire have been designed to be as easy as possible.

Benefits

Rigel is an energy-efficient luminaire (130 lm/W) and, therefore, perfect for illuminating large areas. The shock-proof aluminium body of Rigel has been built to withstand challenging conditions (IK08). In addition, the luminaire is proofed against dust and water (IP66). Rigel's well-designed cooling ribs minimise the accumulation of water and dirt. The cooling ribs also guarantee the long life of the LED components. The plug-and-play feature of Rigel makes it very easy to install. Thanks to the separate connection device casing, the luminaire is also easy and quick to service.

Suitability

Rigel is perfect for lighting various outdoor sites such as sports fields, stadiums, storage areas, parking lots and for large area lighting needs.

Product families and variants

MODEL	TYPE CODE	POWER	LUMINOUS FLUX	LUMINAIRE EFFICACY	LIFETIME	OPERATING TEMPERATURE
RIGEL 900W	GLRI01900	900 W	117000 lm	130 lm/W	L70F10 > 80 000 h	-30 - +50°C

Notes:

All values at ambient temperature +25°C, CCT 5000K, CRI70, luminous flux +-6% tolerance, input power tolerance +-5%.

(4000K, CRI70 version: 103 000lm, 115 lm/W)

Dimensions

MODEL	TYPE CODE	LENGTH (L)	HEIGHT (H)	WIDTH (W)	WEIGHT
RIGEL 900W	GLRI01900	792 mm	401 mm	598 mm	40 kg

General Description

COLOUR TEMPERATURE:	4000 K (optional 3000 K & 5000 K)
COLOUR RENDERING INDEX:	$R_A \geq 70$ (optional 80)
OPTIC:	15°, 30°, 65°x120°(polarized light 10°), 30°x60°(polarized light 10°), 65°x120°(Polarized light 55°)
LIGHT SOURCE SHIELD:	Tempered Glass
IP CLASS:	IP66
IK CLASS:	IK08
SUPPLY VOLTAGE:	100-240 Vac
FREQUENCY:	50-60 Hz
PF:	>0,94
THD:	<20%
OVERVOLTAGE PROT.:	10KV surge protection
CONNECTION:	3-pole installation cable, 2-pole DALI cable
DIMMABILITY:	ON/OFF, DALI ⁽¹⁾
COLOUR:	Black

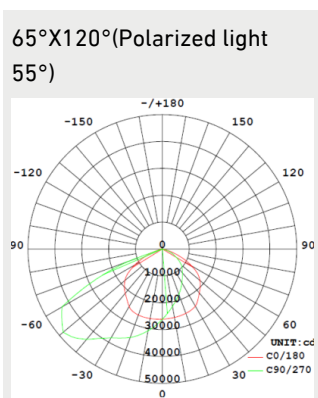
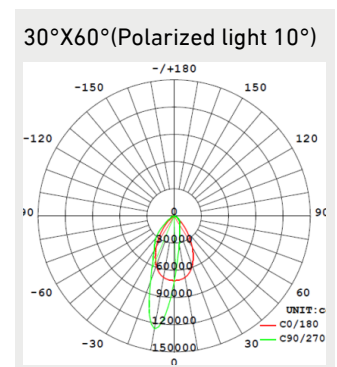
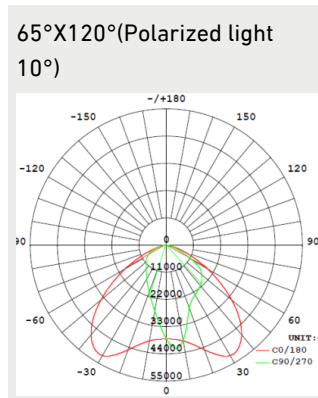
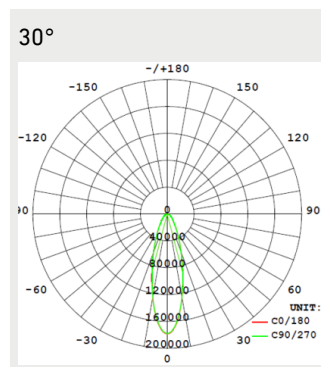
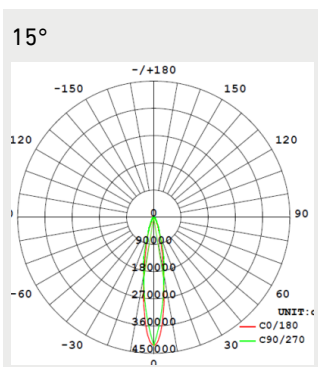
MATERIAL OF THE LUMINAIRE BODY: Aluminium

GUARANTEE: 5 Years

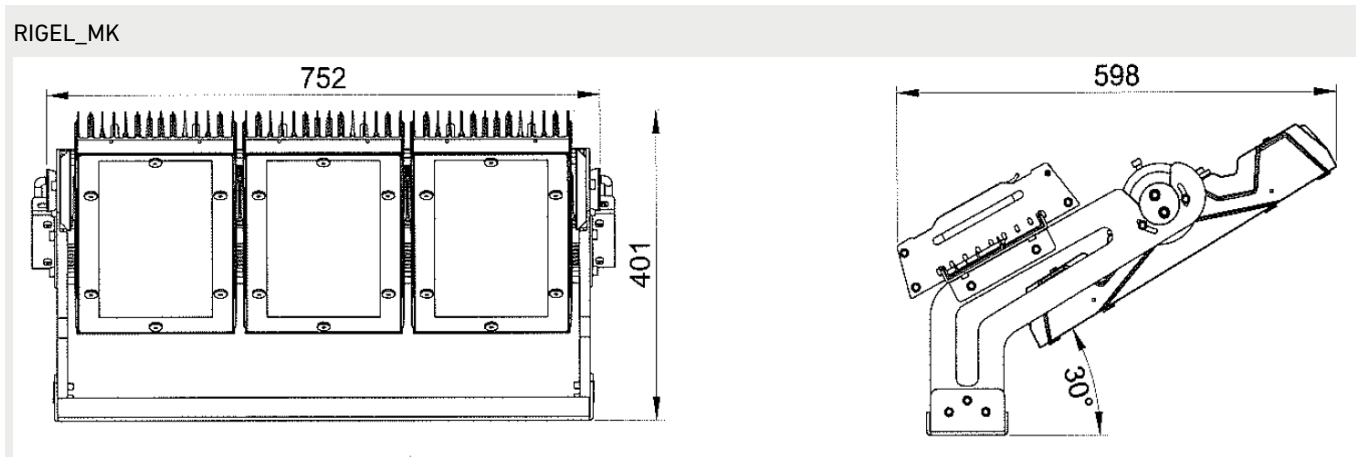
Notes:

- 3 DALI Addresses

Light distribution



Dimensions



Circuit breakers

	B16	B20	B25	B32	C16	C20	C25	C32	D10	D16	D20	D25
RIGEL 900W	1	2	2	3	2	3	4	5	3	5	7	9
RIGEL 900W + OSRAM EBN-OS	3	5	5	8	5	8			8			

CUSTOMER SERVICE:

tel: +358 20 125 5800

info@greenled.fi